

# Digital Pathology System Cognition Master Pro Suite

## For microscope cameras and WSI Several image sources supported

- Snapshot from WSIs of several formats, directly from VM Slide Explorer
- Images from a microscope camera in jpg, .png, .tif or .bmp
- Live image from any desktop application

## Fully integrated into Pathology Information Systems and LIMS

- Integration into your LIMS system: Nexus/PATHOLOGIE, PCS/Athena, ...
- Imaging results are transferred to the system automatically
- The Report Hub allows to accumulate imaging results



ID	Ki67_Version	Ki67_Timestamp	Ki67_Score
Patient 1002	v.1.12.5933.14359	04.08.2016 11:35:36	15.56
Patient 1003	v.1.12.5933.14359	04.08.2016 11:35:51	15.56
Patient 1004	v.1.12.5933.14359	04.08.2016 11:35:58	15.56
Patient 1005	v.1.12.5933.14359	04.08.2016 11:36:04	15.56
Patient 1006	v.1.12.5933.14359	04.08.2016 11:36:08	15.56
Patient 1007	v.1.12.5933.14359	04.08.2016 11:36:13	15.56
Patient 1008	v.1.12.5933.14359	04.08.2016 11:36:16	15.56
Patient 1009	v.1.12.5933.14359	04.08.2016 11:36:20	15.56
Patient 1010	v.1.12.5933.14359	04.08.2016 11:36:24	15.56
Patient 1011	v.1.12.5933.14359	04.08.2016 11:37:23	15.56
Patient 1012	v.1.12.5933.14359	04.08.2016 11:37:32	15.56
Patient 1013	v.1.12.5933.14359	04.08.2016 11:37:35	15.56
Patient 1014	v.1.12.5933.14359	04.08.2016 11:37:38	15.56
Patient 1015	v.1.12.5933.14359	04.08.2016 11:37:41	15.56
Patient 1016	v.1.12.5933.14359	04.08.2016 11:37:45	15.56
Patient 1017	v.1.12.5933.14359	04.08.2016 11:37:49	15.56
Patient 1018	v.1.12.5933.14359	04.08.2016 11:37:52	15.56
Patient 1019	v.1.12.5933.14359	04.08.2016 11:37:55	15.56
Patient 1020	v.1.12.5933.14359	04.08.2016 11:37:58	15.56
Patient 1021	v.1.12.5933.14359	04.08.2016 11:38:01	15.56
Patient 1022	v.1.12.5933.14359	04.08.2016 11:38:05	15.56
Patient 1023	v.1.12.5933.14359	04.08.2016 11:38:07	15.56
Patient 1024	v.1.12.5933.14359	04.08.2016 11:38:10	15.56
Patient 1025	v.1.12.5933.14359	04.08.2016 11:38:13	15.56
Patient 1026	v.1.12.5933.14359	04.08.2016 11:38:16	15.56
Patient 1027	v.1.12.5933.14359	04.08.2016 11:38:20	15.56
Patient 1028	v.1.12.5933.14359	04.08.2016 11:38:22	15.56
Patient 1029	v.1.12.5933.14359	04.08.2016 11:38:25	15.56
Patient 1030	v.1.12.5933.14359	04.08.2016 11:38:28	15.56

## Suitable for studies Automatic Accumulation in Excel

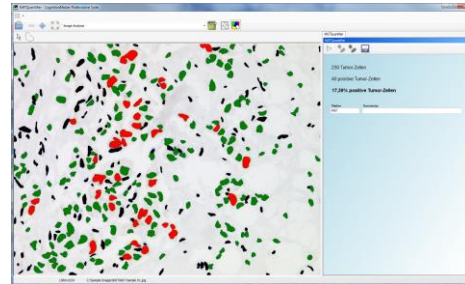
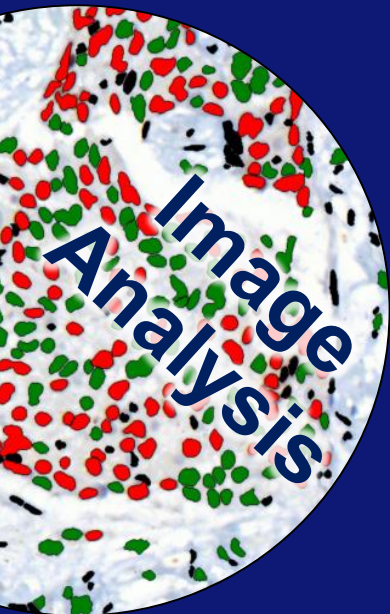
- Accumulation of single analysis results within the Report Hub
- All results and images in one overview
- Export to Excel for studies

VMscope GmbH  
Campus Charité Mitte  
Charitéplatz 1  
10117 Berlin, Germany

Phone:  
+49 (0)30 450 536188  
Fax:  
+49 (0)30 450 536910

info@vmscope.com  
www.vmscope.com

# Imaging Modules within Cognition Master Pro Suite



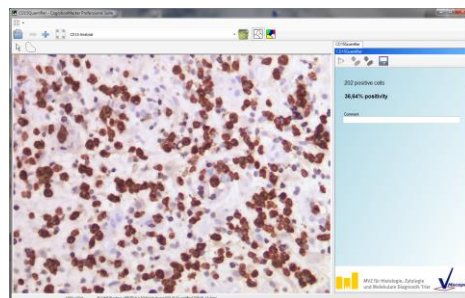
## Ki67 Quantifier

- Fully automated detection of nuclei in Ki67 stained slides
- Options to include or exclude regions or cell groups using freehand selection
- Reports instantly available: Analysis reports available as image and text



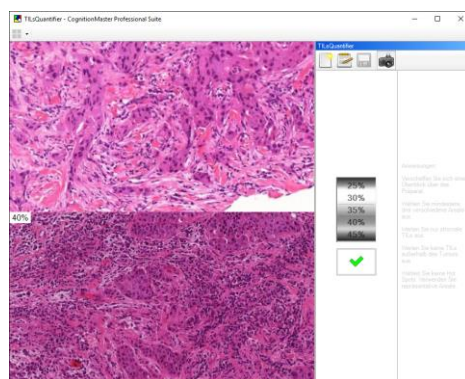
## ER/PR Quantifier

- Fully automated detection of nuclei in ER or PR stained slides
- Selection of the analysis scheme (Remmele or Allred), the staining intensity and the marker
- Automatically calculate scores



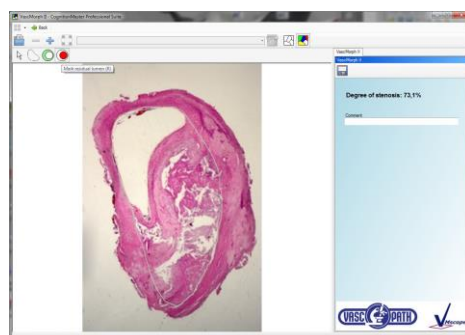
## CD 3/4/8/15/20 Quantifier

- Fully automated detection of inflammation cells in IHC stained slides
- Options to include or exclude regions or cell groups using freehand selection
- Reports instantly available: Analysis reports available as image and text



## TILs Quantifier

- TILs Evaluation using validated reference images
- Validated through international ring study
- Integration of images from the microscope camera into the report



## VascMorph

- Fully automated calculation of the post-operative stenosis grade
- Manual selection of ideal and residual lumen, calculation automated
- Reports instantly available: Analysis reports available as image and text

VMscope GmbH  
Campus Charité Mitte  
Charitéplatz 1  
10117 Berlin, Germany

Phone:  
+49 (0)30 450 536188  
Fax:  
+49 (0)30 450 536910

info@vmscope.com  
www.vmscope.com

Brochure: CM Pro Suite  
As of: 07th April 2016  
© VMscope GmbH Berlin